

PDF DELIVERY

Final print file should preferably be supplied as PDF:

- Create PDF on profile **[PDF/X-1a:2001]**, this is to avoid possible transparency.
- Resolution downsampling to **150 DPI**
- PDF version: **1.3**
- Convert spot colors to FC (this does not apply to crease and cut lines)
- **3 mm bleed** around

BLEED

To properly cut printed materials, 3 mm of bleed is required on all sides. This 3 mm must be added to the final size. We recommend placing text and text frames 4 to 5 mm from the cutting edge.

CUT, RIL AND PERFORATION LINES

All cut, crease and perforation lines should be **overprinted** with 1 pt thickness.

COMPRESSION

Be careful not to submit unnecessarily large files, this can cause errors. Imported images at 100% and 150 DPI (if applicable).

FINALLY

The above specifications are a guideline for processing your order quickly and smoothly. If you have any questions or need advice in creating a proper pdf, please feel free to contact us.

Kind regards on behalf of,

Team Boostyourbox

Hudsonweg 20

4462 HJ Goes

T +31(0)113 - 22 83 50

E info@gbg.nl

I www.gbg.nl

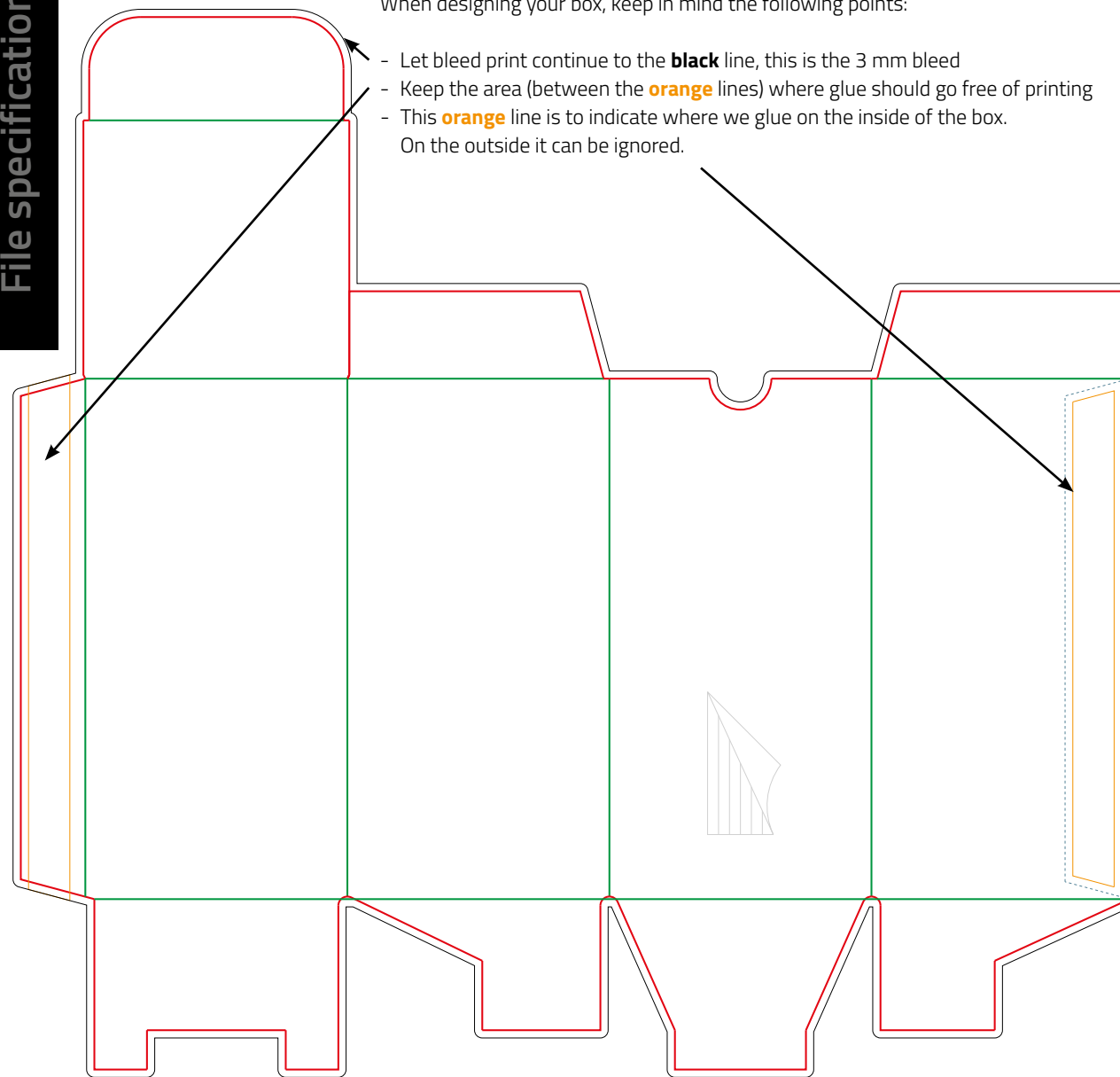


File specifications

FOCUS POINTS DESIGN

When designing your box, keep in mind the following points:

- Let bleed print continue to the **black** line, this is the 3 mm bleed
- Keep the area (between the **orange** lines) where glue should go free of printing
- This **orange** line is to indicate where we glue on the inside of the box. On the outside it can be ignored.

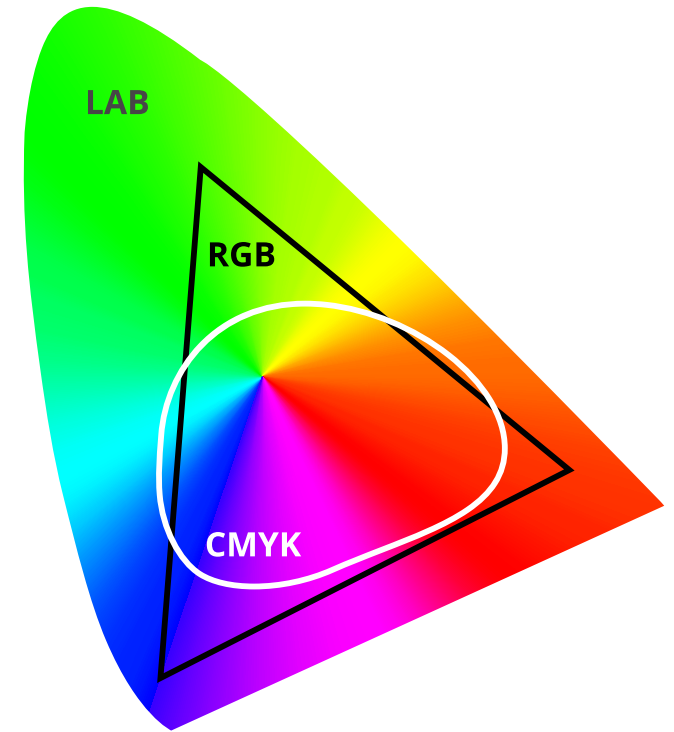


Legenda

- = fold lines
- = cutting lines
- = bleed (3 mm outside the cutting line)
- = part between which the glue comes

RGB vs CMYK

RGB and CMYK are the 2 most common color models used. Keep in mind in the design that our printers cannot print the bright colors of a screen (RGB). This is because the RGB gamut is many times larger than the CMYK gamut, see image below.



See below some examples of colors on the screen and an approximation of how they print on the printer.

